



installed
with
system

Photo: Med Uni Graz

Only the
ORIGINAL is
ingenious

EXPORT PRODUCT LIST

Schnabl fastening systems for all areas of application
in the electrical installation

WITH THE SCHNABL
FASTENING SYSTEM
YOU SAVE UP TO 60%
OF YOUR WORKING TIME.

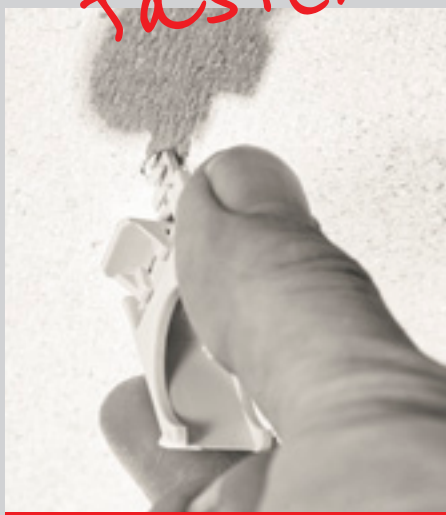


WE WANT TO INSPIRE YOU.

drill



fasten



finish




With the most sophisticated plug-in system for the fastening of cables and conduits, Schnabl is, as technological leader, the standard for ahead-thinking electrical contractors worldwide – made in Austria.

We at Schnabl are driven by the idea to make the lives of installers easier. We believe in setting new standards – we are passionately working on that. With our products the electrician saves up to 60 % of his working time. Watch the time comparison in the video. **Just scan the QR code with your smart-phone or visit us: www.schnabl.works**



THE SCHNABL FASTENING SYSTEM OFFERS MANY BENEFITS.

- > Multiple installation capacity: simply drill and fasten
- > Only one drill diameter (Ø 6 mm) for all Schnabl clips
- > Fastening elements for conduits and cables, recessed and drywall
- > Fastening on insulated ceilings and walls
- > Torque forces up to 40 kg
- > Corrosion-resistant parts
- > Temperature range from -20 to +85 °C
- > UV-stabilised and halogen-free
- > 960 °C filament tested if desired
- > Tested by KEMA, TÜV and the 'Institut für Kunststofftechnik'
- >  Production in special colours

installed quickly and easily



WE FIND SOLUTIONS.

Together with our partners, we have our ears at the market.

We find or invent solutions for our client's challenges – we don't say „it won't work“. Our focus lies on the highest possible benefit for the customer. That is why we are constantly enhancing our products – consistently and strong-willed. Our uncompromisingly high-quality standard guarantees 100% product satisfaction for the user.



Only the original is ingenious.

AREAS OF APPLICATIONS AT A GLANCE

The right Schnabl product for every installation



CONDUIT INSTALLATION

Fastening elements for conduits on different types of surfaces	07
Conduit clips onto steel structures	13
Single and double clips	14



CABLE INSTALLATION

Clips for sheathed cables	15
Fastening elements for aligned installation of sheathed cables	17
Fastening elements for aligned floor installation of sheathed cables	19
Dowel fastening nail for mounting cable ducts	19

METAL FASTENING ELEMENTS

Dowel fastening nail, ceiling nail and setting tool for the functional integrity	20
--	----



FLOOR-, SURFACE- AND RECESSED INSTALLATION

Fastening elements for aligned installation of sheathed cables and flexible conduits	22
Recessed clips for flexible conduits with no plastering	24

TIPS AND TRICKS

With the right tool, any mounting goes much quicker!



HSS DRILL WITH DRILL STOP, Ø 6 MM

Plasterboard, aerated concrete



LANCE DRILL, Ø 6 MM

Hollow brick, earthenware tiles, glass

Page 25



INSTALLATION IN DRYWALL

Clips, fastening elements and aids for drywall	25
--	----

Page 27



SPECIAL APPLICATIONS

Fastenings on insulated ceilings and walls	27
Accessories for conduit clips on basket trays	27
Fastening of junction boxes	27
Fixing conduits to wire mesh in concrete	28
Special solution for the recessed installation	28
Drilling in hollow building blocks, ceramic tiles, glass	28
Special solutions for electrical installation	29

Page 30



BREAKING LOADS, HOLDING FORCE, INSTALLATION SPACING

Average values of the torque test	30
Torque values for fire resistance classes	30
Recommended installation spacing	30

SCHNABL PRODUCTS AT A GLANCE

31

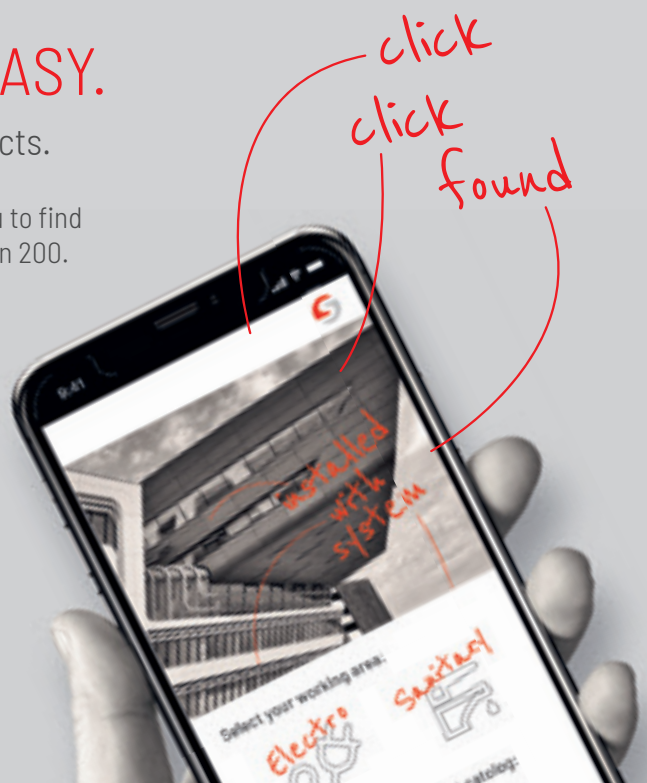
FINDING PRODUCTS MADE EASY.

It's only a few clicks to the suitable Schnabl products.

The new, intuitively operable Schnabl App makes it easy for you to find exactly the right product for your working area out of more than 200. Download this handy app to your phone now!



Finding products made easy. With the Schnabl App for Android and iOS.





apple green
sky blue
lemon yellow

Only the
ORIGINAL is
ingenious

Bring colour into the world of electrical installations! With Schnabl you can synchronize the colour of almost all products with your project. Ask your sales representative. Find more ideas for simple, fast and colourful conduit- and cable laying here: **www.schnabl.works**.



Our Euro-Clip EC in different colours for fixing conduits on all surfaces.

 **Schnabl®**
time saving products

CONDUIT INSTALLATION

Fastening elements for conduits on different types of surfaces

EC EURO-CLIP

For mounting conduits of different dimensions on all surfaces.

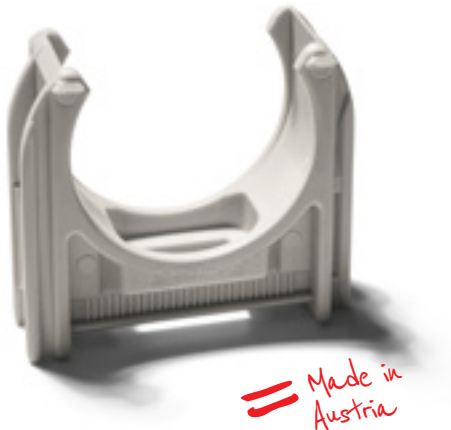
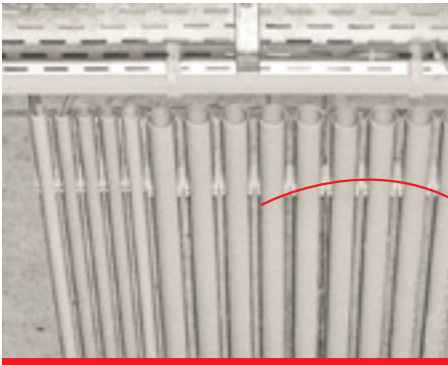
To the product video:



Material halogen-free H0, ABS, UV-stabilised, temperature range: -20 to +85 °C
IEC / EN 61386-25:2011 tested

●●●●● Production in special colours upon request

Type	light grey	Article number grey	black	Insulation conduit Ø mm	Content Pack/Box
EC 16 H0	31020	31021	31024	16	100 / 3,200
EC 20 H0	31080	31081	31084	20	100 / 2,400
EC 25 H0	31120	31121	31124	25	100 / 2,000
EC 32 H0	31160	31161	31164	32	50 / 1,600
EC 40 H0	31200	31201	31204	40	50 / 1,100
EC 50 H0	31220	31221	31224	50	50 / 700



Thanks to the functional clip system, several EC Euro-Clips can be clipped together in various sizes. A production in many special colours is possible.

SC CLIP FOR SHOOTING

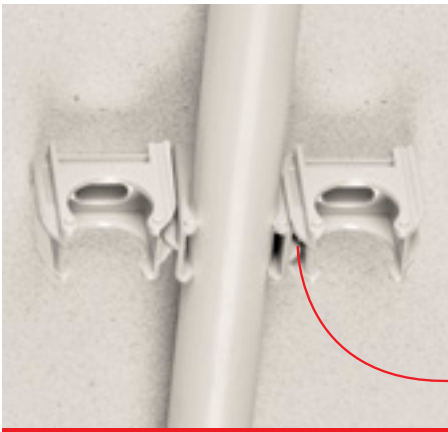
For mounting conduits on concrete walls and ceilings by using a shooting tool. The two rings of the SC clip are matching to the shooting tools from Hilti, Spit and Würth (Art. nr.: 0864 90).

To the product video:



Material halogen-free H0, PP, UV-stabilised, temperature range: -10 to +85 °C
●●●●● Production in special colours upon request

Type	Article number	Insulation conduit Ø mm	Colour	Content Pack/Box
SC 19-20 H0	31400	19-20	light grey	100 / 2,400



Put the SC to the muzzle of the shooting tool so that it does not fall off and then fasten the SC clip to the surface as described in the user manual of the shooting tool.

On both sides of the SC an EC Euro-Clip can be added easily by hand. With only one shot, up to three conduit lines can be mounted.

CONDUIT INSTALLATION

Fastening elements for conduits on different types of surfaces

UVB UNIVERSAL CLAMPING BRACKET

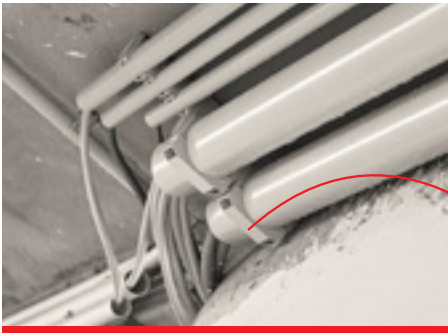
With UVB, even conduits with heavy cable bundles are held securely in the EC Euro-Clip.

To the product video:



Material halogen-free HO, ABS, UV-stabilised, temperature range: -20 to +85 °C
IEC / EN 61386-25:2011 tested, ●●●● Production in special colours upon request

Type	light grey	Article number grey	black	suitable for EC	Content Pack/Box
UVB 16 HO	34020	34021		16	100 / 7,200
UVB 20 HO	34080	34081		20	100 / 6,000
UVB 25 HO	34120	34121		25	100 / 3,600
UVB 32 HO	34160	34161		32	50 / 2,100
UVB 40 HO	34200	34201	34204	40	50 / 1,500
UVB 50 HO	34220	34221	34224	50	50 / 1,000



In conjunction with the UVB, the EC Euro-Clip fulfils the requirements of a closed clamp. This prevents the pipes from slipping out.

FC FLEXI-CLIP™

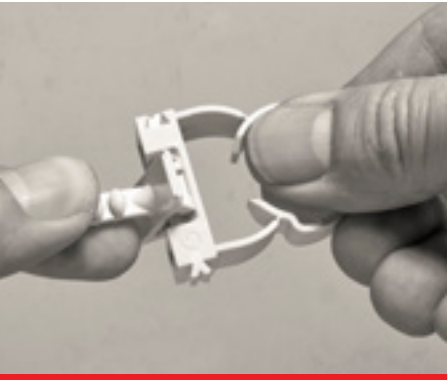
The flexible, millimeter-accurate way of conduit mounting on all surfaces. Each type is suitable for at least two conduit sizes.

To the product video:



Material halogen-free HO, PP, UV-stabilised, temperature range: -10 to +85 °C
IEC / EN 61386-25:2011 tested, ●●●● Production in special colours upon request

Type	Article number	Colour	Content Pack/Box
FC 16-20 HO	33310	light grey	100 / 3,000
FC 20-25 HO	33320	light grey	100 / 2,000
FC 25-32 HO	33330	light grey	100 / 1,200
FC 32-40 HO	33340	light grey	50 / 800
FC 40-50 HO	33350	light grey	50 / 500



For mounting conduits on concrete and drywall the FC Flexi-Clip™ is connected to the ESD-System, for mounting on cable trays it is connected to the EDV or ESV. The FC Flexi-Clip™ can also be fastened by using a screw.



CONDUIT INSTALLATION

Fastening elements for conduits on different types of surfaces

BC BASIC-CLIP

The Basic-Clip BC can be fastened with a screw or with the DSN Dowel Fastening Nail to any surface – to wood, metal or concrete.

To the product video:



Material halogen-free HO, PP, UV-stabilised, temperature range: -10 to +85 °C
IEC / EN 61386-25:2011 tested, ●●●●● Production in special colours upon request

Type	Article number	Colour	Content Pack/Box
BC 16 HO	35016	light grey	200 / 3,600
BC 20 HO	35019	light grey	200 / 3,600
BC 25 HO	35025	light grey	200 / 2,400
BC 32 HO	35032	light grey	100 / 1,800
BC 40 HO	35040	light grey	50 / 900
BC 50 HO	35050	light grey	50 / 900

== Made in Austria



Without the need for further screws, several Basic Clips BC of different sizes can be connected by simply inserting or latching. Mounting time and costs are saved.



ESD EURO-FASTENING ANCHOR

The ESD is the "clip on" fixing for the Schnabl EC Euro-Clip and FC Flexi-Clip™.

To the product video:



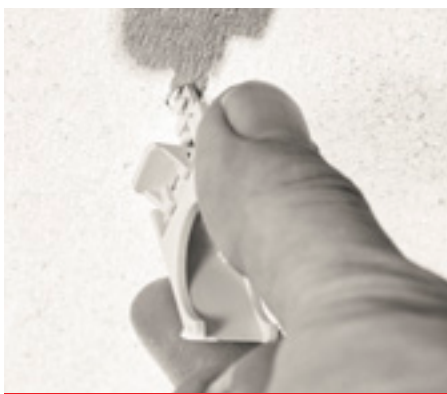
Material halogen-free HO, PA 6, UV-stabilised, temperature range: -20 to +85 °C
IEC / EN 61386-25:2011 tested, ●●●●● Production in special colours upon request

Type	light grey	Article number grey	black	Dowel length mm	Content Pack/Box
ESD 11 HO	31280			11	200 / 10,800
ESD 30 HO	31300	31301	31304	27	100 / 4,800
ESD 45 HO	31320	31321		42	100 / 3,000
ESD 80 HO	31340	31341		80	50 / 1,800

Drilling depth
with ESD 30
only 27 mm



== Made in Austria



The perfect combination:
ESD Euro-fastening anchor and EC Euro-Clip
for efficient conduit laying.

CONDUIT INSTALLATION

Fastening elements for conduits on different types of surfaces

EDV EURO TWIST-ON CONNECTION

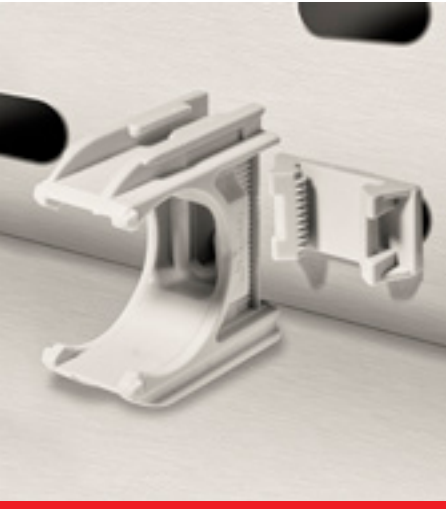
For the installation of conduits on all cable trays with slotted holes with a sheet thickness from 0.5 to 1.1 mm.

To the product video:



Material halogen-free HO, PA 6, UV-stabilised, temperature range: -20 to +85 °C
IEC / EN 61386-25:2011 tested, ● ● ● ● Production in special colours upon request

Type	Article number	Colour	Content Pack/Box
EDV H0	31430	light grey	200 / 3,000



== Made in Austria

Ideal for fixing conduits to all conventional cable trays with slotted holes.

ESV EURO CONNECTOR LOCK

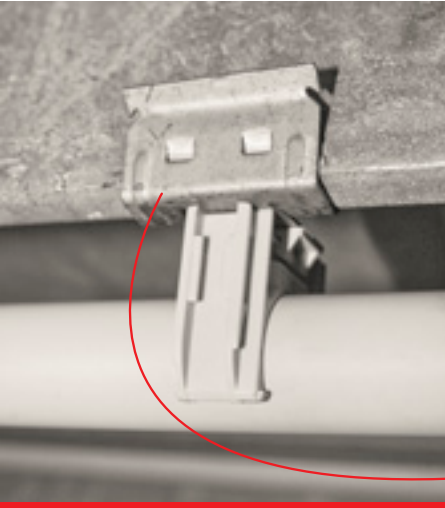
For the installation of conduits on all cable trays with round holes with a sheet thickness from 0.5 to 1.1 mm.

To the product video:



Material halogen-free HO, PA 6, UV-stabilised, temperature range: -20 to +85 °C
IEC / EN 61386-25:2011 tested, ● ● ● ● Production in special colours upon request

Type	Article number	Colour	Content Pack/Box
ESV H0	34430	light grey	200 / 3,000



== Made in Austria

Ideal for fixing conduits to all conventional cable trays with round holes.
The ESV Euro connector lock can be attached to beam clamps as well.

CONDUIT INSTALLATION

Fastening elements for conduits on different types of surfaces

SGC SCHNABL THREAD CLIP

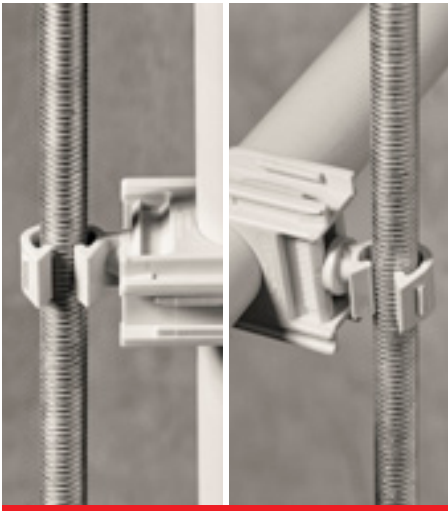
For fastening conduits on M8-M10 threaded rods in combination with the EC Euro-Clip.

To the product video:



Material halogen-free HO, PP, UV-stabilised, temperature range: -10 to +85 °C
●●●●● Production in special colours upon request

Type	Article number	Ø of threaded rods	Colour	Content Pack/Box
SGC HO	31460	M8-M10	light grey	100 / 3,500



The new SGC thread clip enables not only the parallel fixing of conduits to a threaded rod, but is also suitable for conduit fixing at right angle.

ECV EURO CLIP CONNECTOR

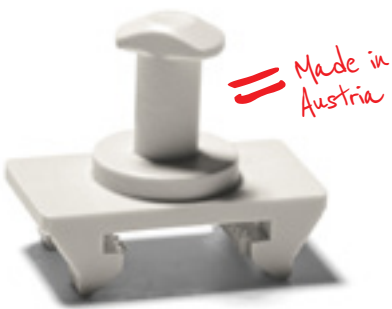
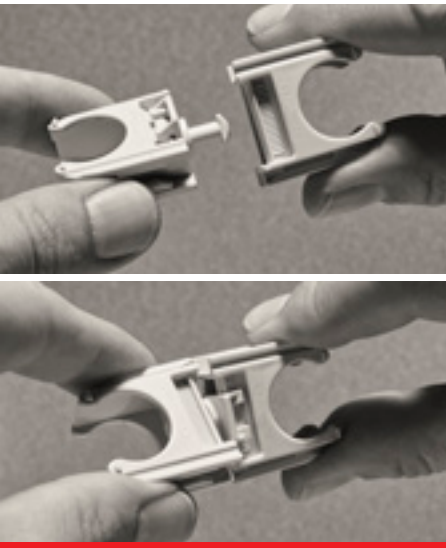
For the connection of two EC Euro-Clips.

To the product video:



Material halogen-free HO, PA 6, UV-stabilised, temperature range: -20 to +85 °C
●●●●● Production in special colours upon request

Type	Article number	Colour	Content Pack/Box
ECV HO	31560	light grey	200 / 3,000



With the ECV you can easily connect two Euro-Clips to add additional conduits in narrow spaces.

CONDUIT INSTALLATION

Fastening elements for conduits on different types of surfaces

ESP EURO SHOOTING PLATE

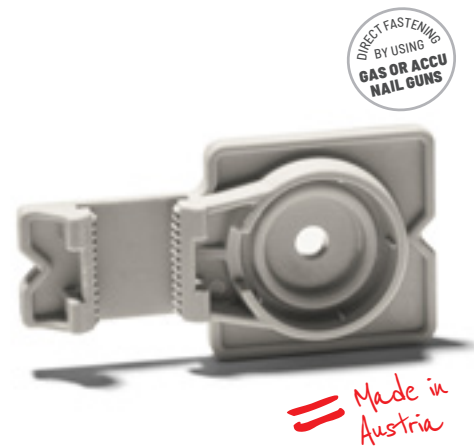
For conduit and cable laying – in conjunction with the EC Euro-Clip system – with the help of a shooting tool. The two rings of the ESP are matched to the shooting tools from Hilti, Spit and Würth (Art. nr.: 0864 90).

To the product video:



Material halogen-free HO, PA 6, UV-stabilised, temperature range: -20 to +85 °C
IEC / EN 61386-25:2011 tested, ●●●● Production in special colours upon request
Cable tie feedthrough up to max. 4.5 mm

Type	Article number	Colour	Content Pack/Box
ESP H0	31440	light grey	100 / 2,000



The ESP is suitable for shooting tools from Hilti, Spit and Würth (Art. nr.: 0864 90). It sticks to the mouth of the shooting tool from these manufacturers leaving your hands free for mounting.

EKP EURO ADHESIVE PAD

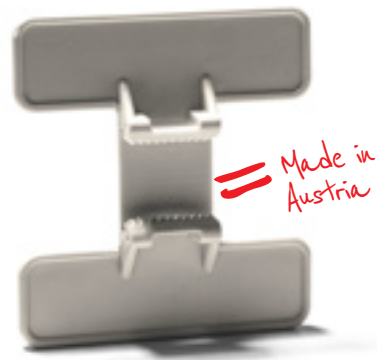
For fastening electrical lines on all surfaces where drills and screws cannot be used, e.g. on steel structures or corrugated sheets.

To the product video:



Material halogen-free HO, PA 6, light grey, UV-stabilised, temperature range: -20 to +85 °C
●●●● Production in special colours upon request

Type	Article number	Length x width mm	Torque values	Content Pack/Box
EKP H0	31360	38 x 35	20 kg	100 / 3,000



The EC Euro-Clip can also be mounted on steel structures or drywall using the EKP Euro adhesive pad.

CONDUIT INSTALLATION

Conduit clips and clips for steel structures

AKS DISTANCE GRIPPER CLAMP

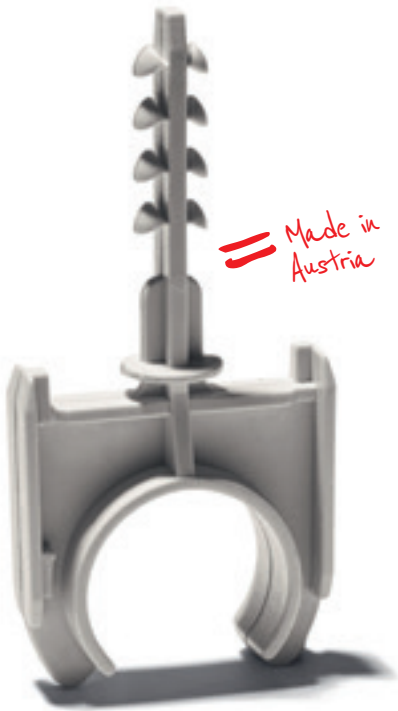
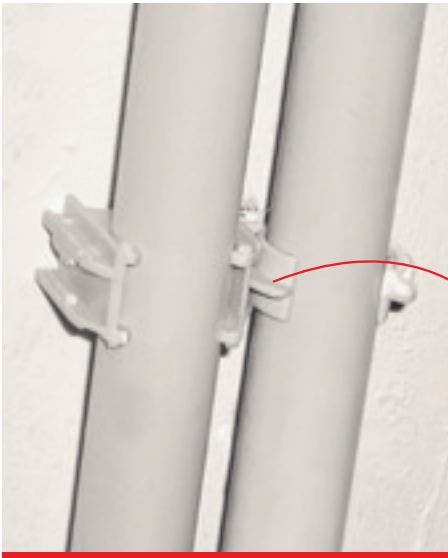
For retaining single conduits with a fixed distance from the wall with the least effort and greatest time efficiency.

To the product video:



Material halogen-free HD, PA 6, UV-stabilised, temperature range: -20 to +85 °C
IEC / EN 61386-25:2011 tested, ●●●● Production in special colours upon request

Type	light grey	Article number grey	Insulation conduit Ø mm	Content Pack/Box
AKS 16 H0	30740	30741	16	200 / 4,800
AKS 20 H0	30800	30801	20	200 / 3,200
AKS 25 H0	30840	30841	25	100 / 2,200
AKS 32 H0	30880	30881	32	100 / 2,000
AKS 40 H0	30900	30901	40	50 / 1,400
AKS 50 H0	30920	30921	50	50 / 750



Should conduits have a set distance to the wall, then the AKS Distance gripper clamp is the way ahead! Can be mounted both ways with every Schnabl Euro-Clip. You only need one drill hole.

RK CONDUIT CLAW

For conduit laying onto steel structures.

To the product video:



Material spring band steel, galvanized, corrosion-resistant

Type	Article number	Clamping range conduit dimension mm	Thickness of steel beams mm	Content Pack/Box
RK 16/1	9032	15-19	2-4	100 / 3,600
RK 20/1	9034	20-24	2-4	100 / 3,000
RK 25/1	9036	25-32	2-4	100 / 2,000
RK 16/4	9038	15-19	4-7	100 / 3,200
RK 20/4	9040	20-24	4-7	100 / 2,800
RK 25/4	9042	25-32	4-7	100 / 2,000
RK 16/8	9044	15-19	8-12	100 / 2,600
RK 20/8	9046	20-24	8-12	100 / 2,400
RK 25/8	9048	25-32	8-12	50 / 1,500



With RK Conduit claw conduits can easily be attached to steel beams.

CONDUIT INSTALLATION

Single- and double clips

ESS SINGLE FASTENING CLAMP

For conduit installation, without wall distance, for example on ceilings and under concrete.

To the product video:



Material halogen-free HO, PP, UV-stabilised, temperature range: -10 to +85 °C

* IEC / EN 61386-25:2011 tested, ●●●●● Production in special colours upon request

Type	Article number	Clamping range mm	Colour	Content Pack/Box
ESS 16-20 H0 *	30120	16-20	light grey	200 / 4,400
ESS 20-25 H0 *	30140	20-25	light grey	200 / 3,200
ESS 25-32 H0 *	30160	25-32	light grey	100 / 2,400
ESS 32-42 H0	30180	32-42	light grey	100 / 1,600



The product for quick installation of conduits onto plaster – the ESS Single fastening clamp from Schnabl.



DSS DOUBLE FASTENING CLAMP

For the parallel laying of two conduits without wall distance.

To the product video:



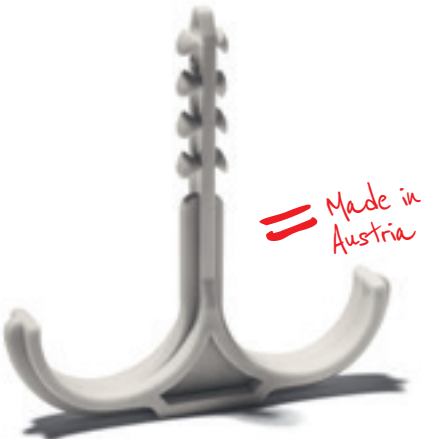
Material halogen-free HO, PP, UV-stabilised, temperature range: -10 to +85 °C

IEC / EN 61386-25:2011 tested, ●●●●● Production in special colours upon request

Type	Article number	Clamping range mm	Colour	Content Pack/Box
DSS 20-25 H0	30240	20-25	light grey	200 / 4,000
DSS 25-32 H0	30250	25-32	light grey	100 / 2,400



One borehole is enough for two conduits – with the DSS Double fastening clamp from Schnabl.



DSA DOUBLE FASTENING CLAMP WITH SPACER

For the parallel laying of two conduits without wall distance; with fixed distance between the conduits.

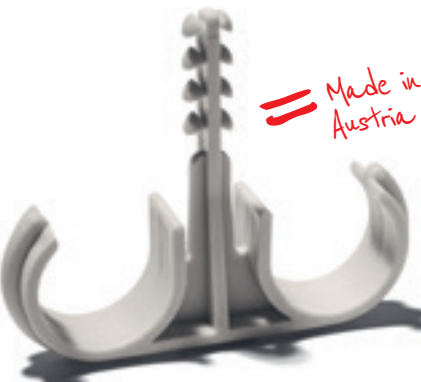
Material halogen-free HO, PP, UV-stabilised, temperature range: -10 to +85 °C

IEC / EN 61386-25:2011 tested, ●●●●● Production in special colours upon request

Type	Article number	Clamping range mm	Colour	Content Pack/Box
DSA 20-25 H0	30260	20-25	light grey	100 / 2,400
DSA 25-32 H0	30270	25-32	light grey	100 / 1,600



The practical DSA Double fastening clamp is also available with a fixed conduit distance.



Only the
ORIGINAL is
ingenious

shoot
insert
line up

✱ or simply stick with the DSN Dowel fastening nail



Here are our Euro-Clips EC and the new floor-cable holder BSH for quick and clean floor installation.

Order is the key to efficient work. That's not a problem – with our new floor-cable holder BSH. EC Euro-Clips can be added in order to lay conduit lines alongside. You can find more ideas for quick and easy floor installation here: www.schnabl.works.

Schnabl®
time saving products

CABLE INSTALLATION

Clips for sheathed cables

DKS DOWEL CLAMP

For the installation of single cables and cable bundles, such as antenna cables, telephone lines, etc.

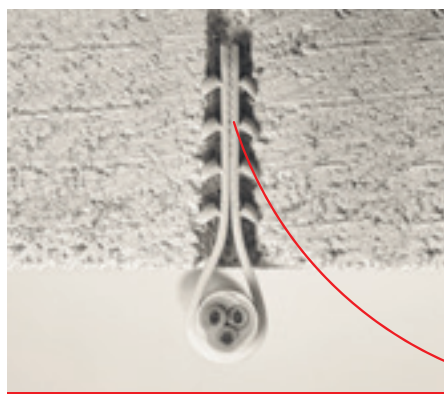
To the product video:



Material halogen-free H0, PP, UV-stabilised, temperature range: -10 to +85 °C

●●●● Production in special colours upon request

Type	Article number			cable Ø mm	Content Pack/Box
	light grey	white	black		
DKS 3-13 H0	30020	30023	30024	3-13	200 / 7,200
DKS 6-20 H0	30030	30033	30034	6-20	200 / 4,800
DKS 8-28 H0	30040	30043	30044	8-28	200 / 6,000
DKS 20-40 H0	30060	30063	30064	20-40	200 / 4,000



Good cable tension options with the DKS. When laid, the strap is barely visible.

The DKS 3-13 has, for enhanced holding power in the drill hole, additional toothing on the inner side.

Only the original is ingenious.

CABLE INSTALLATION

Clips for sheathed cables

FS FIXING MOUNTING BASE

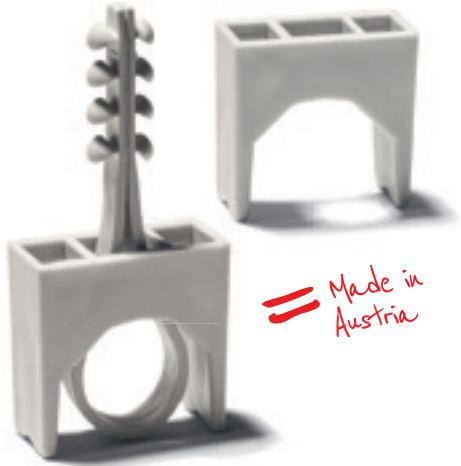
In combination with the DKS for the laying of single cables with wall distance.

To the product video:



Material halogen-free H0, PP, UV-stabilised, temperature range: -10 to +85 °C
●●●●● Production in special colours upon request

Type	Article number	Colour	Content Pack/Box
FS H0	30080	light grey	200 / 4,000



== Made in Austria

With the FS Fixing mounting base in connection with the DKS Dowel clamp, the effortless mounting of thermal conduction cables with a fixed distance of 8 or 15 mm to the ceiling is possible.

DSS DOUBLE FASTENING CLAMP

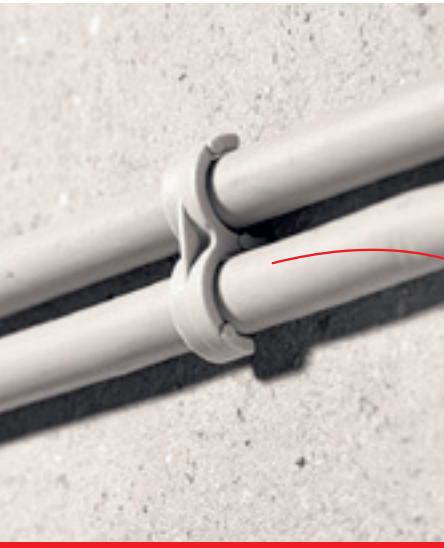
For the parallel laying of two cables without wall distance.

To the product video:

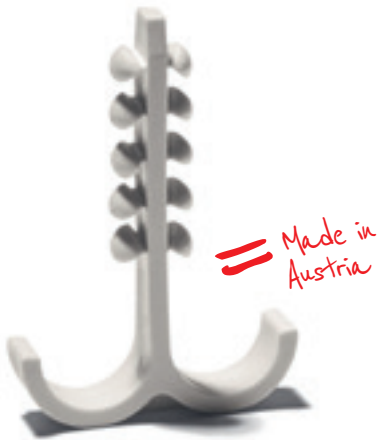


Material halogen-free H0, PP, UV-stabilised, temperature range: -10 to +85 °C
●●●●● Production in special colours upon request

Type	Article number	Clamping range mm	Colour	Content Pack/Box
DSS 10 H0	30220	4-12	light grey	200 / 7,200



One borehole is enough for two cables - with the double fastening clamp from Schnabl.



== Made in Austria

CABLE INSTALLATION

Fastening elements for aligned installation of sheathed cables

KB CABLE BRACKET

For aligned installation of plastic-sheathed cables.
For a secure hold, a maximum drilling depth of 27 mm is sufficient.

To the product video:

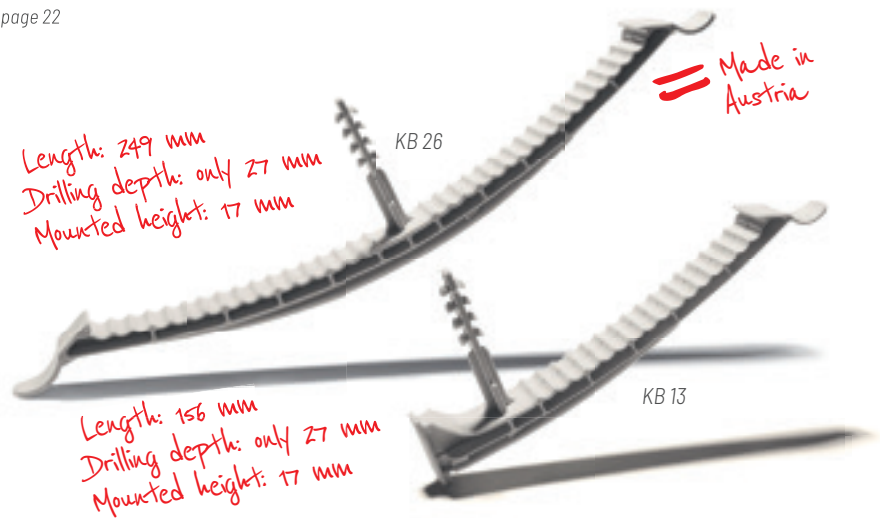


Material halogen-free H0, PP, UV-stabilised, temperature range: -10 to +85 °C
●●●●● Production in special colours upon request

Type	Article number	Capacity*	Colour	Content Box
KB 13 H0	30430	max. 13	light grey	100
KB 26 H0	30450	max. 26	light grey	50

* based on NYM 3 x 1.5 mm², for cables with a larger diameter see TB, page 22

KB Cable brackets were developed for aligned installations of cable bundles. An additional EC Euro-Clip for conduit installation can be mounted at the KB.



KBS CABLE BRACKET FOR SHOOTING

For the aligned installation of plastic-sheathed cables using common direct shooting fastening systems. The KBS is adapted to the shooting tools from Hilti, Spit and Würth (Art. nr.: 0864 90).

To the product video:

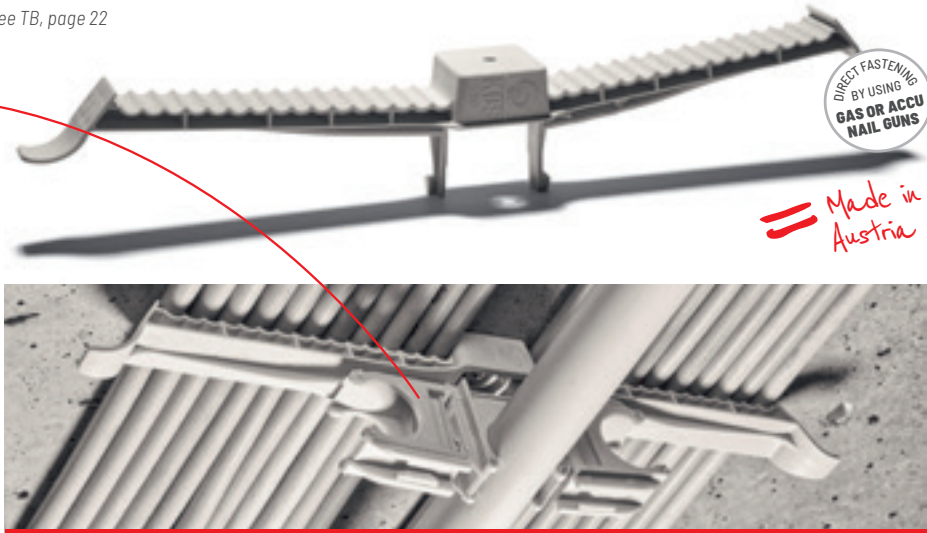
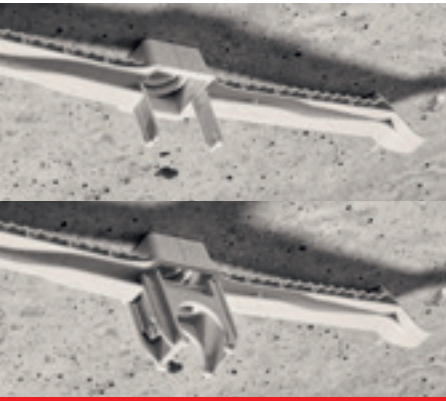


Material halogen-free H0, PP, UV-stabilised, temperature range: -10 to +85 °C
●●●●● Production in special colours upon request

Type	Article number	Capacity*	Colour	Content Pack/Box
KBS 20 H0	30460	max. 22	light grey	100 / 500

* based on NYM 3 x 1.5 mm², for cables with a larger diameter see TB, page 22

With the help of one or more EC Euro clips, up to three conduits can be attached to the KBS.



CABLE INSTALLATION

Fastening elements for aligned installation of sheathed cables

SH CABLE HOLDER

For the multiple carrying of up to 80 plastic-sheathed cables with Ø 10 mm.
For a secure hold, a maximum drilling depth of 27 mm is sufficient.

To the product video:



Material halogen-free HO, PP, UV-stabilised, temperature range: -10 to +85 °C, ●●●●● Production in special colours upon request

Type	Article number	Capacity*	Colour	Content Box
SH 40 HO	30530	max. 40	light grey	100
SH 80 HO	30550	max. 80	light grey	100

* based on NYM 3 x 1.5 mm², for cables with a larger diameter see TB, page 22

The SH Cable holder forms a closed ring around the plastic-sheathed cables and can be re-opened using a handle.
Up to two EC Euro-Clips of different dimensions for conduit installation can be mounted.



SHS CABLE HOLDER FOR SHOOTING OR SCREWS

For quick and easy multiple carrying of up to 35 sheathed cables (Ø 10 mm) using common direct shooting fastening systems or simply with screws on wood or metal. The two rings of the SHS are adapted to the nail guns from Hilti, Spit and Würth (Art. nr.: 0864 90).

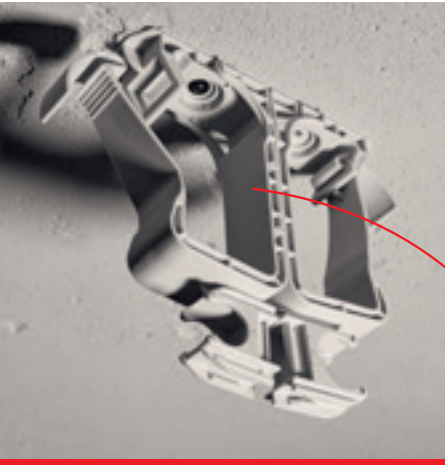
To the product video:



Material halogen-free HO, PP, UV-stabilised, temperature range: -10 to +85 °C, ●●●●● Production in special colours upon request

Type	Article number	Capacity*	Colour	Content Box
SHS 35 HO	30590	max. 35	light grey	100

* based on NYM 3 x 1.5 mm², for cables with a larger diameter see TB, page 22



The possibility of adding a second SHS as well as the Schnabl EC Euro-Clip makes the SHS cable holder even more efficient.

CABLE INSTALLATION

Fastening elements for aligned floor installation of sheathed cables
Dowel fastening nail for mounting cable ducts

BSH FLOOR-CABLE HOLDER

For the quick floor installation using gas or accu nail guns or with the DSN Dowel fastening nail.

To the product video:

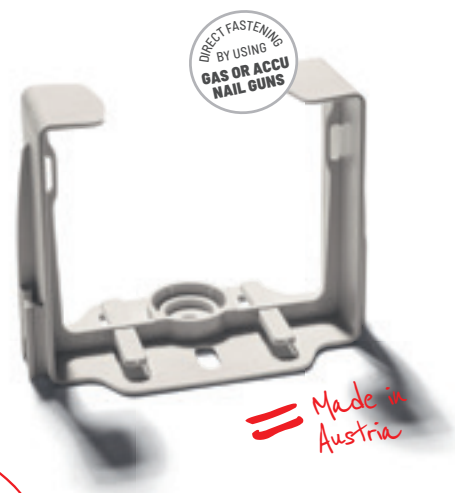


Material halogen-free HO, PP, UV-stabilised, temperature range: -10 to +85 °C

●●●● Production in special colours upon request

Type	Article number	Capacity*	Colour	Content Box
BSH 45 H0	30600	45	light grey	100

* based on NYM 3 x 1.5 mm², for cables with a larger diameter see TB, page 22



The possibility of adding several EC Euro-Clips makes the Floor-cable holder even more efficient.

DSN DOWEL FASTENING NAIL

Dowel fastening nail for fixing cable trunking, for smoke detectors and small lamps.

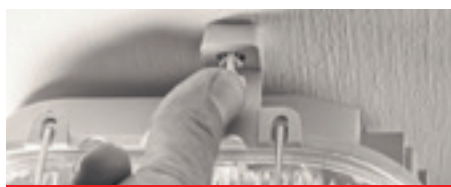
To the product video:



Material halogen-free HO, PP, UV-stabilised, temperature range: -10 to +85 °C

●●●● Production in special colours upon request

Type	Article number	Nail length mm	Colour	Content Pack/Box
DSN 30 H0	30320	31	light grey	200 / 10,800
DSN 40 H0	30340	40	light grey	200 / 7,200
DSN 50 H0	30360	49	light grey	200 / 6,000



With the DSN 30 and DSN 40 you will successfully fasten fire detectors, lamps and sockets „at the push of a thumb“. With the new, adapted head, the DSN locks onto the BC Basis-Clip with one click.

SD PLUG-IN DOWEL NAIL

For the fastening of cable bundles in concrete and brick walls, especially for temporary installation, by using cable ties up to 9 mm width.

To the product video:



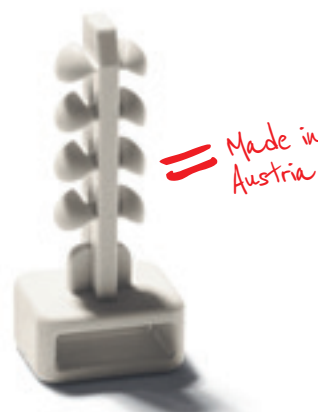
Material halogen-free HO, PP, UV-stabilised, temperature range: -10 to +85 °C

●●●● Production in special colours upon request

Type	Article number	Colour	Content Pack/Box
SD 30 H0	32030	light grey	100 / 4,000



A cable tie and a SD Plug-in dowel nail are sufficient for mounting a bundle of cables.



METAL FASTENING ELEMENTS

Dowel fastening nail, ceiling nail and setting tool for the functional integrity

MDSN METAL DOWEL FASTENING NAIL

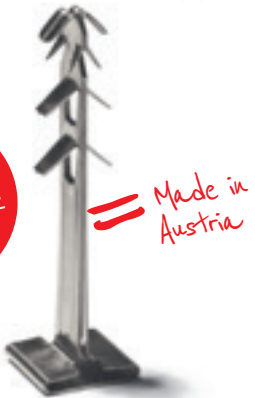
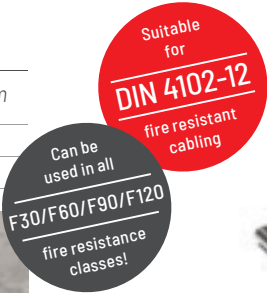
The patented fastening solution for fire proof installations. For mounting fire resistant clips and cable holders according to DIN 4102-12 and everywhere, where plastic fasteners may not be used. Can be used in all fire resistance classes (F30–F120).

Material stainless steel W-No.: 1.4310, material thickness: 0.3 mm, max. thickness of fastening element: 10 mm

Type	Article number	Nail length mm	Content Pack/Box
MDSN	9002	36	100 / 3,900



To the product video:



The patented mounting solution for the functional integrity. Fire proof plug-in dowel for the fixing of electrical installations. Apart from a drill, you don't need any tools.

MND CEILING NAIL

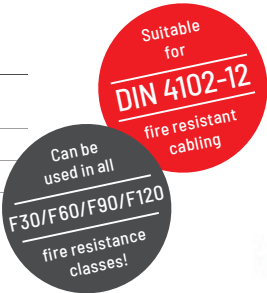
The MND 6-45 is suitable for fastening electrical lines and equipment incl. fire resistant cable clips, cable brackets and cable holders according to DIN 4102-12, but also for mounting other parts up to 5 mm thickness. Can be used in all fire resistance classes (F30–F120).

Steel HX420LAD Z100 zinc coated. (Material in different stainless steel versions - price on request)

Type	Article number	Nail length mm	Content Pack
MND	9003	45	100



To the product video:



The MND Ceiling nail expands, no need to hold the fixing. This saves up to 15 % working time for mounting.

SWZ SETTING TOOL FOR MND

For mounting of metal cable holders with the MND dowel nail. The setting tool MND can be used with any hammer drill with "SDS Plus" coupling.

Material metal C45, 1.0503

Type	Article number	Weight in kg	Content Pack
SWZ Setting Tool	9904	0,682	1



Easy fastening! Insert the setting tool sideways into the metal cable holder, fix and drive in the MND.

To the product video:



THE SCHNABL SYSTEM WORLD

Schnabl product combinations which you were perhaps not aware of

ECV EURO-CLIP CONNECTOR + EC EURO-CLIP + FC FLEXI-CLIP™

With the ECV Euro-Clip Connector, an EC Euro-Clip can easily be connected with a FC Flexi Clip. This combination is ideal for fastening conduits in false floors.



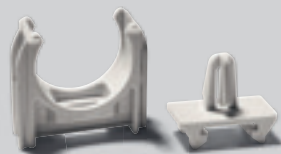
DHI INSULATION HOLDER + EC EURO-CLIP + ESV EURO-CONNECTOR LOCK

By means of an ESV, the EC Euro-Clip can be fixed to the DHI Insulation holder. In this way, mounting conduit lines on insulated ceilings and walls perfectly works.



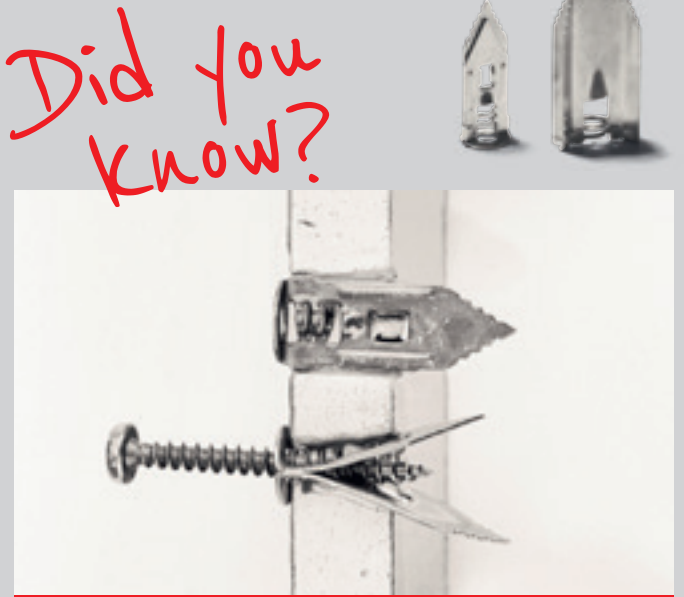
ESV EURO-CONNECTOR LOCK + EC EURO-CLIP + BEAM CLAMP

For fastening conduits on all standard cable trays with round holes and sheet thickness of 0.5 to 1.1 mm. The ESV Euro-Connector lock can also be fixed to a beam clamp.



THE PD BOARD ANCHOR IS SUITABLE FOR FIRE PROTECTION DRYWALLS (BY RIGIPS AND KNAUF).

With the PD board anchor, you can easily fasten different kinds of equipment on drywalls and even wood wool boards.



FLOOR-, SURFACE- AND RECESSED INSTALLATION

Fastening elements for aligned installation of sheathed cables and flexible conduits

TAP SUPPORT ANCHOR PANEL FOR TA 30 AND TA 100

For laying cable on surfaces such as metal, wood or plaster by simply screwing the TAP Support anchor panel to the surface, for holding the TA Support anchor and TB Terrace bracket.

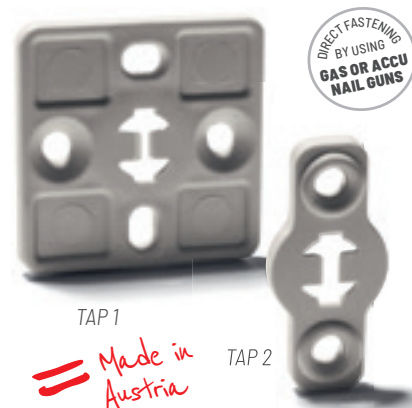
To the product video:



Material halogen-free HO, PP, UV-stabilised, temperature range: -10 to +85 °C

●●●● Production in special colours upon request

Type	Article number	Length x width mm	Colour	Content Pack/Box
TAP 1 HO	33250	35 x 35	light grey	100 / 3,000
TAP 2 HO	33230	35 x 16	light grey	100 / 9,000



With the TA Support anchor and the TB Terrace bracket, you successfully fasten cables or conduits on metal and wood by using screws or direct fasteners.

TA SUPPORT ANCHOR FOR TB 10 AND TB 20

For fastening cables, flexible tubing and conduits, on and under plaster and for the floor installation.

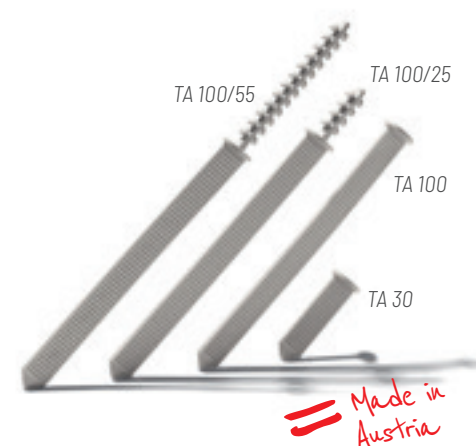
To the product video:



Material halogen-free HO, PA 6, light grey, UV-stabilised, temperature range: -20 to +85 °C

●●●● Production in special colours upon request

Type	Article number	Shaft length mm	Dowel length mm	Content Pack/Box
TA 30 HO	33110	30		100 / 8,000
TA 100 HO	33120	100		100 / 3,600
TA 30/25 HO	33130	30	25	100 / 5,400
TA 100/25 HO	33170	100	25	100 / 2,400
TA 30/55 HO	33150	30	55	100 / 3,000
TA 100/55 HO	33190	100	55	100 / 1,600



TB TERRACE BRACKET FOR LOCKING ON TO TA

The TB provides a secure hold, even with different conduit dimensions, for the surface- and recessed installation without plastering and for the floor installation.

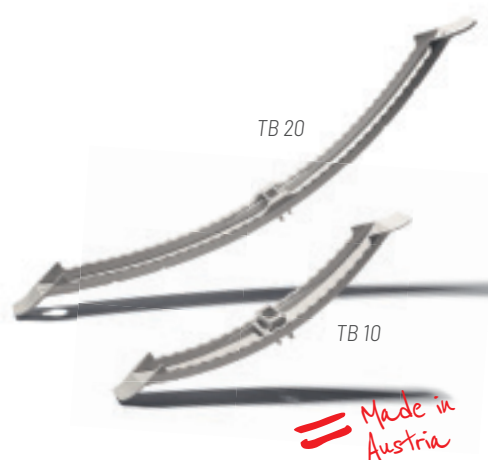
To the product video:



Material halogen-free HO, POM, UV-stabilised, temperature range: -20 to +100 °C

●●●● Production in special colours upon request

Type	Article number	Clamping range mm	Colour	Content Pack/Box
TB 10 HO	33050	100	light grey	50 / 1,000
TB 20 HO	33080	200	light grey	25 / 600



With the TB in two sizes, Schnabl has a system for all requirements – on or under drywall – without plastering or for quick conduit laying on the floor! Safe hold – even with different conduit dimensions!

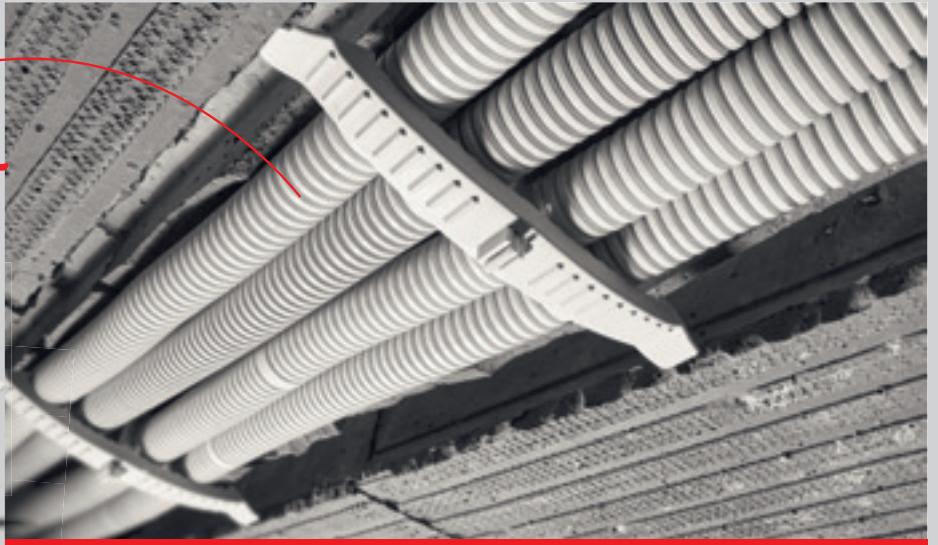
INSTALLATION OPTIONS USING THE TERRACE BRACKET

Three Schnabl products – many possible uses

Recessed
installation

TB TERRACE BRACKET + TA SUPPORT ANCHOR

For recessed installations
without gypsum



Floor installation

TB TERRACE BRACKET + TA SUPPORT ANCHOR

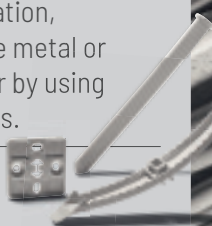
Forget the time consuming
installation by perforated
metal-tape. The combination
of TA and TB is outstanding
for floor installation.



Surface installation

TB TERRACE BRACKET + TA SUPPORT ANCHOR + TAP SUPPORT ANCHOR PANEL

By means of this combination,
fastening on surfaces like metal or
wood is made easy, either by using
screws or direct fasteners.



RECESSED INSTALLATION

Recessed clips for flexible conduits with no plastering
Special applications for the recessed installation

USE RECESSED CLAMP SINGLE

For the simple laying of flexible conduits without plastering.

Up from now made of 100 % recycled material, halogen-free H0, PP, grey, temperature range: -10 to +85 °C
●●●●● Production in special colours upon request

Type	Article number	Clamping range conduit dimension mm	Dowel length mm	Content Pack/Box
USE 16-20/55 H0	12110	16-20	55	100 / 3,200
USE 20-25/55 H0	12120	20-25	55	100 / 2,400
USE 25-32/55 H0	12130	25-32	55	100 / 2,000



To the product video:



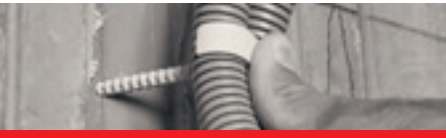
Simply brilliant: the integrated nib on the interior side of the clip enables the conduit to tense between the two clips for easier cable insertion.

USD RECESSED CLAMP DOUBLE

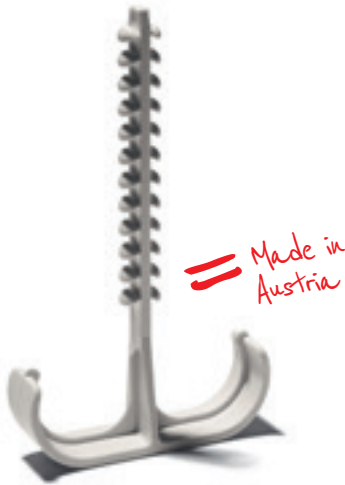
For the simple laying of flexible conduits without plastering, on plasterboard, concrete and hollow brick, for laying two conduits.

Material halogen-free H0, PP, light grey, temperature range: -10 to +85 °C
* up from now made of 100 % recycled material, halogen-free H0, PP, grey, temperature range: -10 to +85 °C
** IEC / EN 61386-25:2011 tested, ●●●●● Production in special colours upon request

	Type	Article number	Clamping range conduit dimension mm	Dowel length mm	Content Pack/Box
Concrete	USD 16-20/25 H0 **	12220	16-20	25	200 / 4,800
	USD 20-25/25 H0 **	12230	20-25	25	100 / 3,200
	USD 25-32/25 H0 **	12240	25-32	25	100 / 1,600
Hollow brick	USD 16-20/55 H0 *	12170	16-20	55	100 / 3,200
	USD 20-25/55 H0 *	12180	20-25	55	100 / 2,400
	USD 25-32/55 H0 *	12190	25-32	55	100 / 1,600



To the product video:



Two conduits are mounted at the same time with the USD with just one borehole.
Thanks to the integrated nib on the interior clip side, the conduit can be tensed for easier cable insertion.

UPC IN-WALL CLIP

For a fast, tool-less cable-fixing in wall channels of 12 to 45 mm.

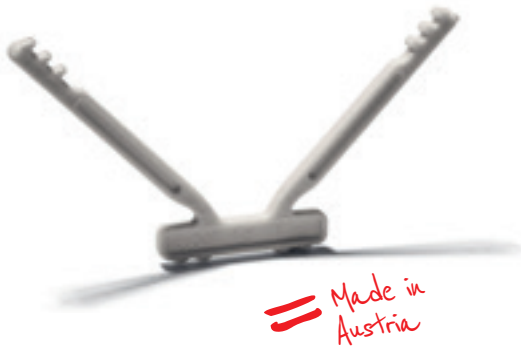
Up from now made of 100 % recycled material, halogen-free H0, PP, grey, temperature range: -10 to +85 °C
●●●●● Production in special colours upon request

Type	Article number	Content Pack/Box
UPC H0	12200	200 / 2,400



A lot of benefits: toolless cable fixing in vertical and horizontal wall channels, easy to plaster, fixing without risk of damaging the cable lines.

To the product video:





There is no easier way to mount conduits, luminaires or junction boxes on insulated ceilings or walls. No matter if the insulation thickness is 3 or 30 cm, we have the appropriate Insulation fixing. Find here more ideas for simple and fast cable installation: www.schnabl.works.



Our Insulation fixing DHI für 3 – 30 cm insulation thickness.

Schnabl®
time saving products

SURFACE- AND RECESSED INSTALLATION / IN DRYWALL

Recessed clamps for conduits

USA AUTOMATIC RECESSED CLAMP

For the simple laying of flexible conduits without plastering, on drywall, concrete and hollow brick.

To the product video:



Material halogen-free HO, PP, light grey, temperature range: -10 to +85 °C

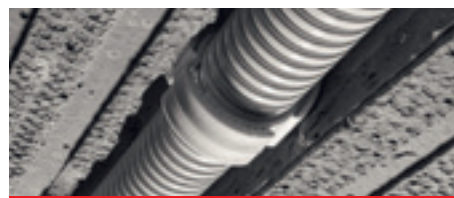
* up from now made of 100 % recycled material, halogen-free HO, PP, grey, temperature range: -10 to +85 °C

** IEC / EN 61386-25:2011 tested, ●●●● Production in special colours upon request

	Type	Article number	Clamping range conduit dimension mm	Dowel length mm	Content Pack/Box
Drywall	USA 16-20/11 HO **	12330	16-20	11 ***	100 / 3,200
	USA 20-25/11 HO **	12340	20-25	11 ***	100 / 2,400
	USA 25-32/11 HO **	12350	25-32	11 ***	50 / 1,200
Concrete Drywall	USA 16-20/25 HO **	12430	16-20	25 ****	100 / 3,200
	USA 20-25/25 HO **	12440	20-25	25 ****	100 / 2,200
	USA 25-32/25 HO **	12450	25-32	25 ****	100 / 1,200
	USA 32-42/25 HO	12640	32-42	25 ****	50 / 700
Hollow brick	USA 16-20/55 HO **	12530	16-20	55 *	100 / 2,400
	USA 20-25/55 HO **	12540	20-25	55 *	100 / 1,600
	USA 25-32/55 HO **	12550	25-32	55 *	50 / 1,000
	USA 32-42/55 HO	12650	32-42	55 *	50 / 600

*** for laying in drywalls up to 12.5 mm thick.

**** for laying in drywalls up to 30 mm thick and on gypsum fibreboard.



USA 16-42/25

USA 16-42/55



== Made in Austria

USA 16-32/11

An innovative product for sub-plaster mounting – the USA Automatic recessed clamp. A quick press is enough to affix the clamp to the conduit. The integrated nib on the interior side of the clamp enables the conduit to tense between the two clamps for easier cable insertion.

Only the original is ingenious.

INSTALLATION IN DRYWALL

Clips, fastening elements and auxiliary material for drywall and construction wood

CF C-FIX FOR IMPACT MOUNTING

For fastening conduits and cable lines at the inner side of drywall and even on construction wood.

To the product video:



Material chromed steel. Corrosion protected according to ÖNORM B 3415.

Type	Article number	Conduit Ø mm	Content Pack/Box
CF 16	9116	16	100 / 3,200
CF 20	9120	20	75 / 2,400
CF 25	9125	25	50 / 1,600
CF 32	9132	32	25 / 800
CF 40	9140	40	20 / 640



With C-Fix, conduits can be mounted to drywalls easily without drilling. The unique shape ensures a firm grip and leaves the outer wall undamaged.

! The C-Fix fits perfectly on fire protection walls (from Rigips and Knauf).

PD BOARD ANCHOR FOR DRYWALL AND WOODWOOL SLABS

For the attachment of electrical equipment to plasterboard and woodwool slabs.

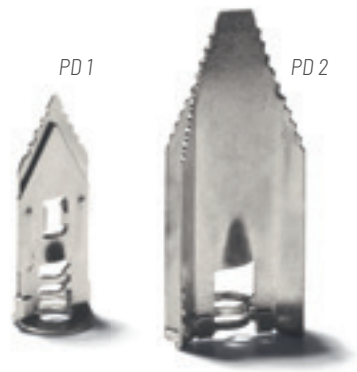
To the product video:



Material spring steel galvanized

Type	Article number	Screw Ø mm	Length mm	Content Pack/Box
PD 1	9080	3,5 – 4,5	30	100 / 5,000
PD 2	9082	3,5 – 4,5	43	100 / 3,000

Recommended screws: 3.5 – 4 mm Ø, screws not included in delivery package.



Use the PD Board anchor to attach the EC Euro-Clip easily in drywall and even on woodwool slabs.

! The PD fits perfectly on fire protection walls (from Rigips and Knauf).

SBA SCHNABL DRILL STOP

For the exact drilled depth in drywall.

To the product video:

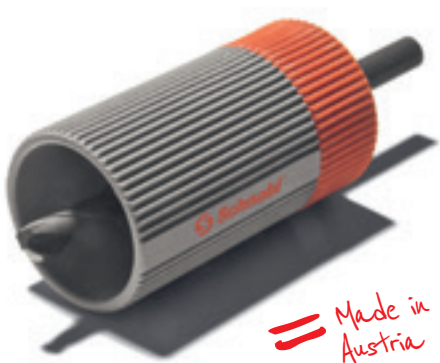


Material Polyamid PA 6, glass fibre reinforced

Type	Article number	Drill Ø mm	Outer Ø mm	Colour
SBA	32905	6	30	grey-red



Ideal for mounting in drywall: the SBA reliably prevents the drywall from being drilled through. With the SBA Schnabl drill stop you easily can set the drill depth.



== Made in Austria

SPECIAL APPLICATIONS

Fastenings on insulated ceilings and walls · Accessories for conduit clips on basket trays
Fastening of junction boxes

DHI INSULATION FIXING

For the simple mounting of electrical equipment.

To the product video:



Material halogen-free HO, PA 6, light grey, UV-stabilised, temperature range: -20 to +85 °C

●●●●● Production in special colours upon request

Type	Article number	Insulation thickness cm	Total length cm	Disc Ø cm	Content Box
DHI 8 HO	31510	3-4	8	6	225
DHI 10 HO	31530	4-6	10	6	175
DHI 13 HO	31550	6-8	13	6	150
DHI 15 HO	31570	8-10	15	6	125
DHI 17 HO	31590	10-14	17.5	6	75
DHI 21 HO	31600	16	21	5	120
DHI 25 HO	31610	15-20	25	5	75
DHI 30 HO	31630	20-25	30	5	75
DHI 35 HO	31650	25-30	35	5	70

Assembly instructions: minimum setting depth in the stable subsurface = 45 mm

Drilling diameter = 10 mm. Minimum drilling depth = overall length DHI + 10 mm - Insulation thickness

Recommended screws: Steel sheeting- or chipboard screws 4 mm, screw-in depth in DHI = 10-15 mm.



== Made in Austria

DHI 8-17: Ø 6 cm
DHI 21-35: Ø 5 cm

With the DHI Insulation fixing, you don't just mount the insulation but also the electricity supply.

GTH BASKET TRAY HOLDER

Easy and cost effective solution for mounting conduits and junction boxes on cable trays.

To the product video:



Material galvanised

Type	Article number	Content Pack/Box
GTH	9001	50 / 1,600



Incredibly easy appliance! The GTH Basket tray holder for the time-saving mounting of conduits and junction boxes on basket trays.

SDC SCHNABL DISTRIBUTION BOX CLIP

Save time and energy when installing junction boxes onto cable trays.

To the product video:



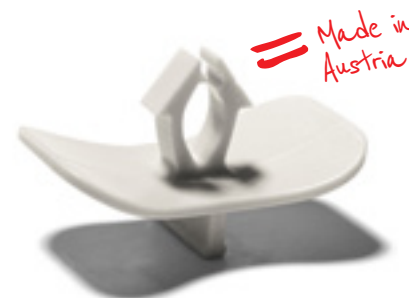
Material halogen-free HO, POM, UV-stabilised, temperature range: -20 to +100 °C

●●●●● Production in special colours upon request

Type	Article number	Colour	Content Pack/Box
SDC HO	31450	light grey	200 / 3,000



SDC offers a time- and effort-saving installation of junction boxes onto cable trays.



== Made in Austria

SPECIAL APPLICATIONS

Fixing conduits to wire mesh in concrete · Special solution for the recessed installation
Drilling in hollow building blocks, ceramic tiles, glass

SBC SCHNABL WIRE MESH CLIP

To fix conduits to wire mesh in concrete.

To the product video:



Material halogen-free HO, PP regranulat, brown, silicon-free, TR: -10 to +85 °C

Type	Article number	Conduit dimension mm	Wire dimension mm	Content Box
SBC HO	34238	20 and 25	12	500



The conduit is pushed into the big opening, with the small opening attached to the wire. Fixings in the small opening prevent the clip from sliding.



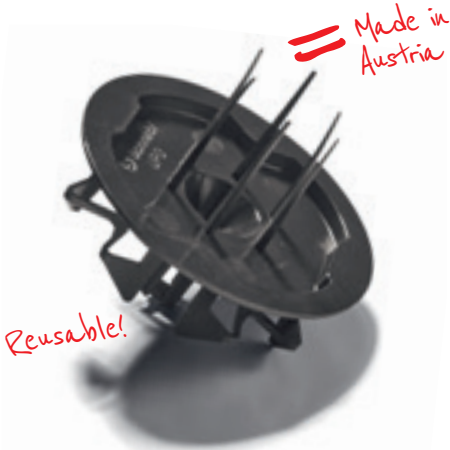
UPD FLUSH SOCKET COVER AND ACCESSORIES

For an easy finding of the flush socket after plastering.
With practical UDZ - for easy exposure of the flush-mounted boxes!

To the product video:



Type	Article number	Content Box
UPD	12100	100



The UPD is suitable for a variety of flush sockets.
The UPD flush socket cover enables, by its markers, a fast and secure retrieval of flush sockets.

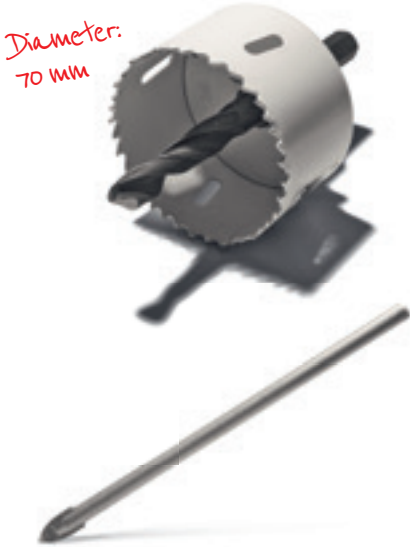
CORE DRILL

The core drill secures a clean drill-out of the flush socket cover.

To the product video:



Type	Article number	Drill Ø mm
CORE DRILL	12108	70



LB LANCE DRILL

For the exact hole in hollow bricks, tiles and earthenware.

To the product video:



Type	Article number	Drill Ø mm	Shaft length mm
LB 6/100	9095	6	100
LB 6/150	9097	6	150
LB 8/160	9099	8	160
LB 10/160	9101	10	160
LB 10/250	9103	10	250

The LB Lance drill is also ideal for tiling and ceramics.

SPECIAL APPLICATIONS

Special solutions for electrical installation

SGD HANGER BOLT

For fastening conduits on insulated ceilings using conduit clips.

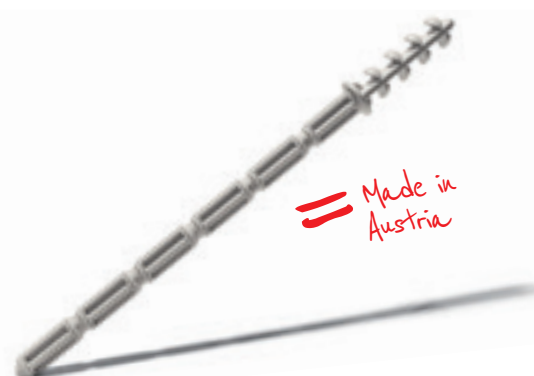
Material halogen-free HO, PP regranulat, light grey, silicon-free, TR: -10 to +85 °C

●●●●● Production in special colours upon request

To the product video:



Type	Article number	Length mm	Torque values	max. load	Content Pack/Box
SGD M8/80	34300	80	65 kg	8 kg	50 / 2,500
SGD M8/120	34310	120	65 kg	8 kg	40 / 1,800



The Schnabl Hanger Bolt SGD is by far lighter and faster installed than the usual metal fasteners and can be simply cut to length, depending on the thickness of the insulation material.

ESD-M8 EURO PLUG-IN DOWEL

By the aid of this system element, you successfully install conduits and pipes together with the SGD Schnabl hanger bolt, FC Flexi-Clip™ or EC Euro-Clip.

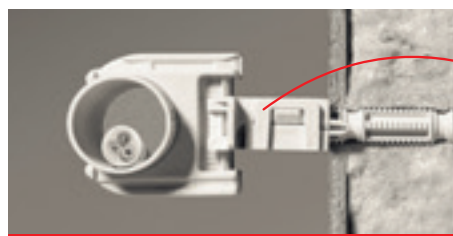
Material halogen-free HO, PA 6, UV-stabilised, temperature range: -20 to +85 °C

●●●●● Production in special colours upon request

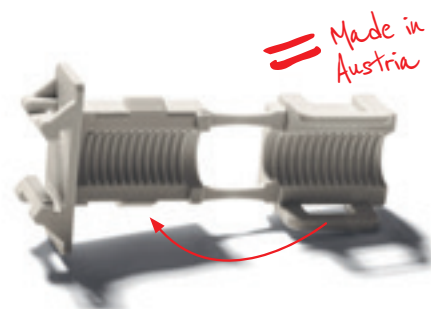
To the product video:



Type	Article number	Colour	Content Pack/Box
ESD-M8	31480	light grey	100 / 1.600



The product combination of ESD-M8, SGD and EC or FC enables a simple and fast installation of conduits on insulation material.



FKE FLAT CABLE BRACKET

For the efficient fastening of flat cables 5x16 mm² and 5x25 mm², such as for E-charging stations.

Material halogen-free HO, PP, dark grey, temperature range: -10 to +85 °C

●●●●● Production in special colours upon request

To the product video:



Type	Article number	Colour	Content Pack/Box
FKE HO	30091	dark grey	100 / 1.600
FKE HO	30100	light grey	100 / 1.600



Of course, an Euro-Clip EC can also be attached for additional conduit installation.



BREAKING LOADS, HOLDING FORCE, INSTALLATION SPACING

Schnabl products in detail

THE BREAKING LOADS OF THE SCHNABL PRODUCTS:

The following table shows the average values of the torque tests (all in Newton):

Subsurface/product	Concrete	Full brick	Hollow brick ¹⁾ (Porotherm)	Aerated concrete ²⁾	Drywall 15 mm	Drywall 25 mm
ESD 30	359.00	325.50	335.70	151.30		225.60 ²⁾
AKS 20	391.30	341.90	245.20	151.30		
AKS 25	504.40	404.30	387.20	187.10		
KB 13	335.10	345.72				
KB 26	374.28	381.34				
SH 40	278.18	273.96				
SH 80	287.42	281.60				
USA 20-25/25	241.40	210.20	234.70	106.60		191.20 ²⁾
USE 20-25/25			223.40	233.10		
CF 16					161.54	
CF 20					147.56	169.00
CF 25					129.22	168.00
CF 32					149.00	
CF 40					120.00	
PD 1 ³⁾					459.50	933.10
PD 2 ³⁾					446.90	1,227.00
DKS 3-13	248.00	271.80				
DHI 15 ⁴⁾	780.60	828.70	707.80	378.70		
DSN 30	233.00					85.00 ²⁾
TA 100/25	369.00	374.00	365.20	148.10		
MDSN	250.00					
SGD	637.65					

¹⁾ In this material drilling was done without "percussion" (with 6 mm lance drill)

²⁾ In these materials drilling was done without "percussion" (with 6 mm iron drill)

³⁾ Mean value at Heraklith: PD 1: 115.70 N, PD 2: 210.70 N

⁴⁾ Assembly instructions: minimum setting depth in the stable subsurface = 45 mm. drilling diameter = 10 mm. minimum drilling depth = overall length DHI + 10 mm

The torque values given are breaking loads in which the fastening tears or the fastening shaft has been pulled out of the borehole. The required safety factor must be observed based on the particular use.

HOLDING FORCE

The holding forces of Schnabl-products for fire resistant installations in different fire ratings:

Product	Fire resistant classes			
	F30	F60	F90	F120
MDSN	8 kg	8 kg	7 kg	5 kg
MND	35 kg	25 kg	15 kg	10 kg

RECOMMENDED INSTALLATION SPACING

Attachment points for SH for horizontal installation of sheathed cables NYM 3 x 1.5 mm² at a distance of 50 cm to a maximum of 70 cm, for KB and TB up to a maximum of 80 cm. For cables with a smaller diameter or less stability, we recommend a correspondingly shorter distance. A suitable strain relief must be provided for longer, vertical cable lengths. More detailed information on the laying distances can be found in the EN IEC 61914 standard.

You can find the general terms and conditions of Schnabl Stecktechnik GmbH on the Internet at www.schnabl.works/de/schnabl-agb-international

Legal notice: Schnabl Stecktechnik GmbH · Bahnhofplatz 1 · Po box 63 · 3100 St. Polten · Austria · Telephone +43 2742 221 67-0 · office@schnabl.works
www.schnabl.works · Design: www.arno-brandauer.at · Photos: Stefan Ziller · Print and written errors reserved. Issue 01/2023.

SCHNABL PRODUCTS AT A GLANCE

Once you've worked with them you'll never go back!

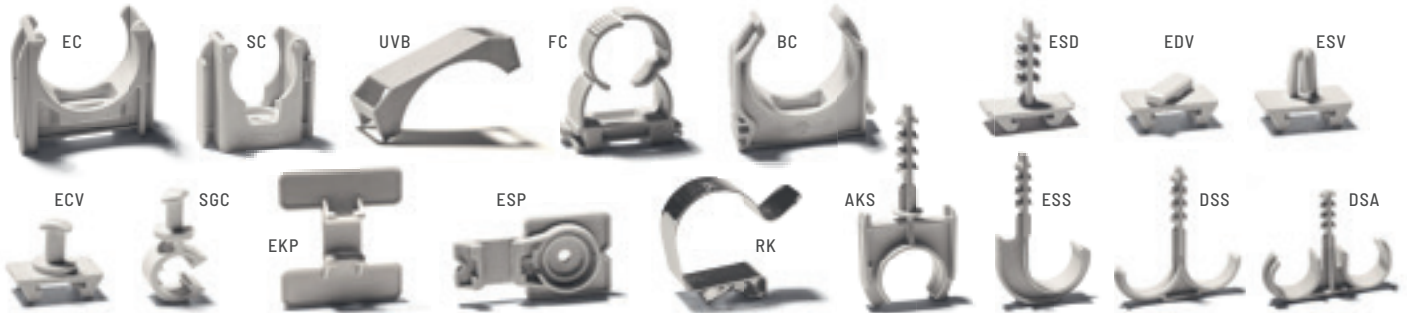
Only the
ORIGINAL is
ingenious

CONDUIT INSTALLATION

EC Euro-Clip	Page 7
SC Clip for shooting	Page 7
UVB Universal clamping bracket	Page 8
FC Flexi-Clip™	Page 8
BC Basis-Clip	Page 9
ESD Euro-fastening anchor	Page 9

EDV Euro twist-on connection	Page 10
ESV Euro connector lock	Page 10
SGC Schnabl thread clip	Page 11
ECV Euro clip connector	Page 11
ESP Euro shooting plate	Page 12
EKP Euro adhesive pad	Page 12

AKS Distance gripper clamp	Page 13
RK Conduit claw	Page 13
ESS Single fastening clamp	Page 14
DSS Double fastening clamp	Page 14
DSA Double fastening clamp with spacer	Page 14

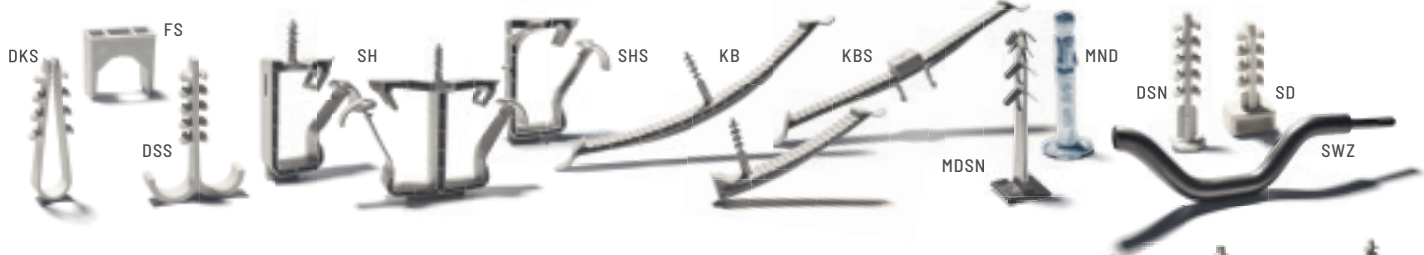


CABLE INSTALLATION

DKS Dowel clamp	Page 15
FS Fixing mounting base	Page 16
DSS Double fastening clamp	Page 16
KB Cable bracket	Page 17

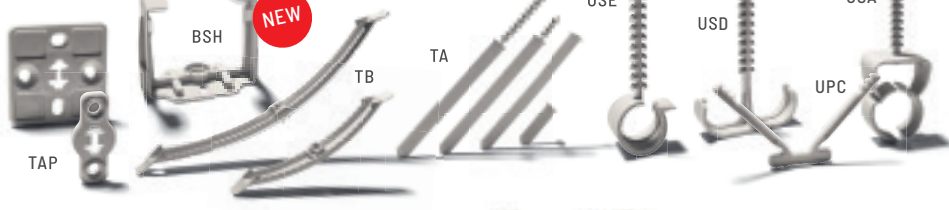
KBS Cable bracket for shooting/drilling	Page 17
SH Cable holder	Page 18
SHS Cable holder for screws	Page 18
DSN Dowel fastening nail	Page 19

SD Plug-in dowel nail	Page 19
MDSN Metal dowel fastening nail	Page 20
MND Ceiling nail	Page 20
SWZ Setting tool for MND	Page 20



FLOOR-, SURFACE- AND RECESSED INSTALLATION

BSH Floor-cable holder	Page 19
TAP Support anchor panel	Page 22
TA Support anchor	Page 22
TB Terrace bracket	Page 22
USE Recessed clamp single	Page 24
USD Recessed clamp double	Page 24
UPC In-Wall Clip	Page 24
USA Automatic recessed clamp	Page 25



INSTALLATION IN DRYWALL

USA Automatic recessed clamp	Page 25
CF C-Fix	Page 26

PD Board anchor	Page 26
SBA Schnabl drill stop	Page 26



SPECIAL APPLICATIONS

Fastening on insulations	
DHI Insulation fixing	Page 27
Fastening on cable trays	
GTH Basket tray holder	Page 27
Fastening of junction boxes	
SDC Schnabl distribution box clip	Page 27

Fastening in concrete	
SBC Schnabl wire mesh clip	Page 28
Special solution for recessed installation	
UPD Flush socket cover	Page 28
Drilling in hollow building blocks, ceramic tiles, glass	
LB Lance drill	Page 28

Special solutions for electrical installation	
SGD Hanger bolt	Page 29
ESD-M8 Euro fastening anchor	Page 29
FKE Flat cable bracket	Page 29



Only the original is ingenious.



Schnabl Stecktechnik GmbH, Bahnhofplatz 1, po box 63, 3100 St. Pölten, Austria
Telephone +43 2742 22167-0, office@schnabl.works, www.schnabl.works

